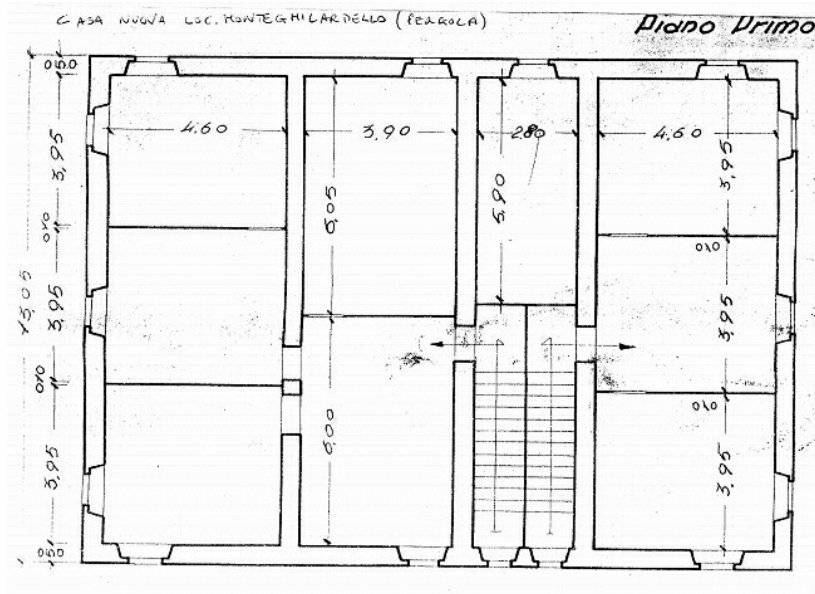
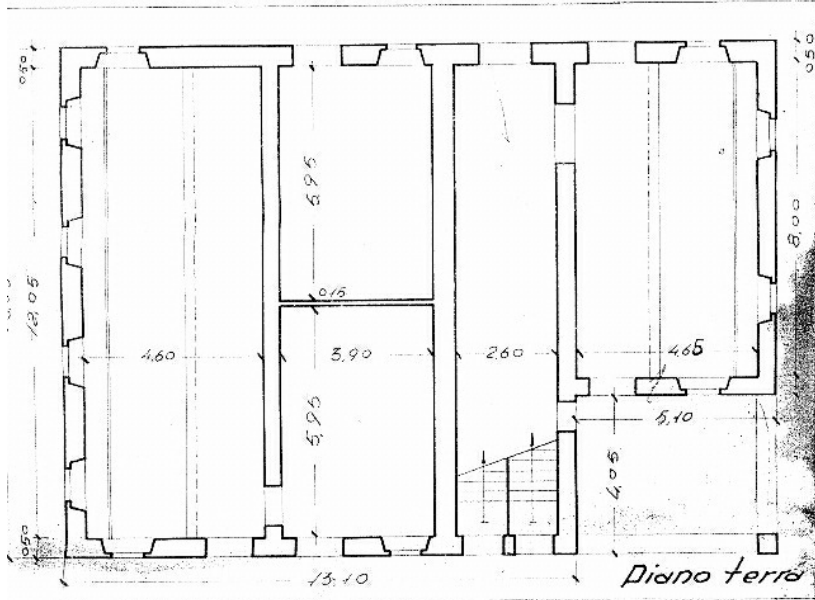


These are the floorplans of the main building at Fenigli (Borgo).

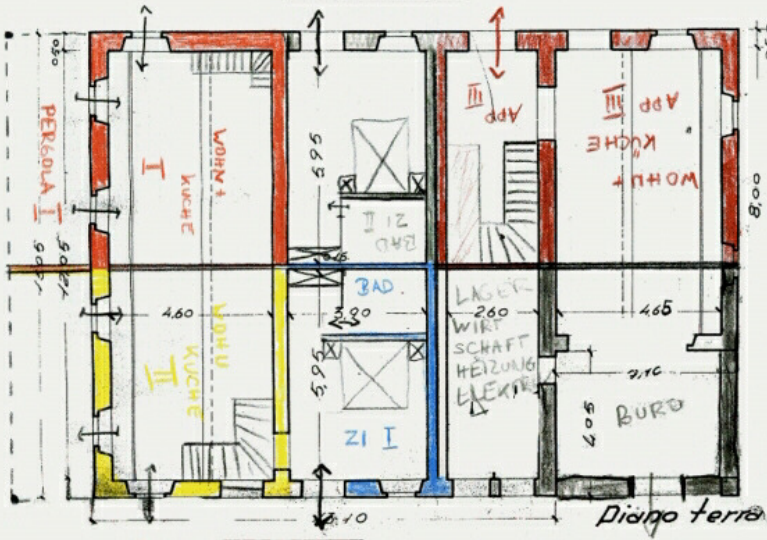
The upper drawings are the actual state

The lower drawings are a suggestion of how to separate the entire building into apartments for rent.

There are no floorplans for the second building (160 sqm) which in this project was meant to be the private house of the owners



ERDGESCHOSS



1. STOCK

CASA NUOVA LOC. MONTEGRILARDELLO (PERGOLA)

